



GAT MONTHLY MEMBERSHIP PROGRESS REPORT

Results as of: 7/31/2021

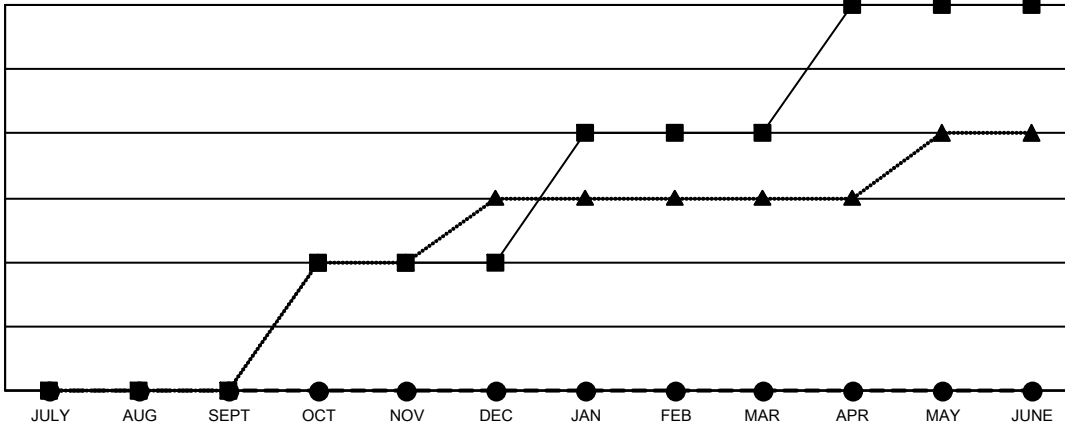
Multiple District 13

LOCATION: OHIO

| Clubs | | | |
|-----------------------|---------------|-----------|---------------|
| RESULTS FOR 2021-2022 | | | |
| QUARTER | NEW CLUB GOAL | NEW CLUBS | DROPPED CLUBS |
| JULY/AUG/SEPT | 0 | 0 | 2 |
| OCT/NOV/DEC | 2 | 0 | 0 |
| JAN/FEB/MAR | 2 | 0 | 0 |
| APR/MAY/JUNE | 2 | 0 | 0 |

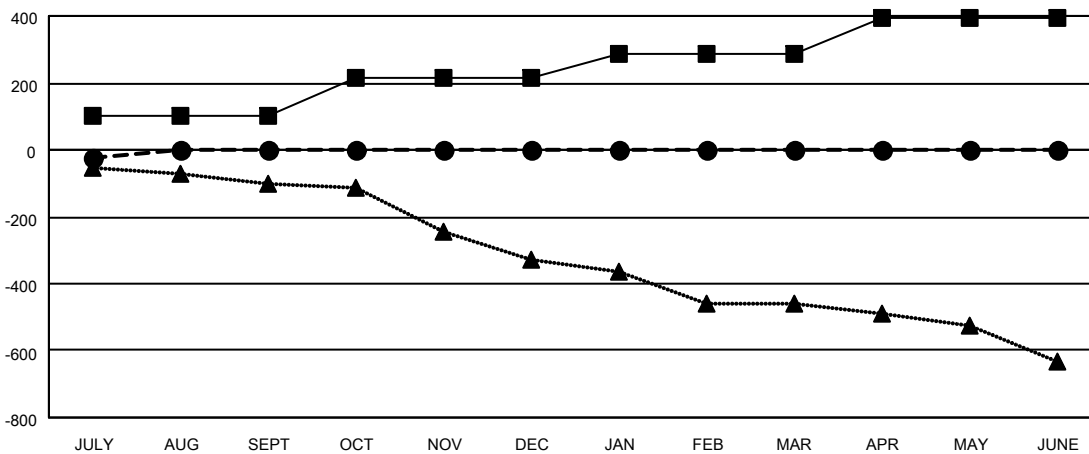
| Members | | | |
|-----------------------|------------------------|----------------------|--|
| RESULTS FOR 2021-2022 | | | |
| QUARTER | MEMBER GROWTH NET GOAL | MEMBER GROWTH ACTUAL | DROPPED MEMBERS ACTUAL (including transfers) |
| JULY/AUG/SEPT | 104 | 76 | 87 |
| OCT/NOV/DEC | 109 | 0 | 0 |
| JAN/FEB/MAR | 75 | 0 | 0 |
| APR/MAY/JUNE | 104 | 0 | 0 |

GOALS AND ACTUAL NEW CLUBS CUMULATIVE



- - CURRENT YEAR GOALS FOR NEW CLUBS
- - CURRENT YEAR ACTUAL NEW CLUBS
- ▲ - LAST YEAR ACTUAL NEW CLUBS

GOALS AND ACTUAL MEMBERS CUMULATIVE



- - MEMBER GROWTH NET GOAL
- - MEMBER GROWTH ACTUAL
- ▲ - LAST YEAR MEMBERSHIP ACTUAL

| | |
|------------------------|-----------|
| DROPPED CLUBS: 2 | |
| DROPPED MEMBERS | |
| DECEASED | 16 |
| CLUB CANCELLED | 0 |
| OTHER | 71 |
| TOTAL | 87 |

37 CLUBS OF 374 ADDED 1 OR MORE NEW MEMBERS

| GENDER DISTRIBUTION | |
|---------------------|----------------|
| MALE | 7,103 (69.97%) |
| FEMALE | 3,048 (30.03%) |

[CLICK HERE FOR CUMULATIVE MEMBERSHIP DATA](#)

| | |
|---------------------------------|-------|
| TOTAL FAMILY UNIT MEMBERS | 2,087 |
| FAMILY MEMBERS PAYING HALF DUES | 1,066 |